



ESMIT

European School of Multimodality Imaging and Therapy



ESMIT

SPONSORSHIP

BROCHURE

Get your Dose of Education

Partner with ESMIT to support innovation
and excellence in nuclear medicine education!

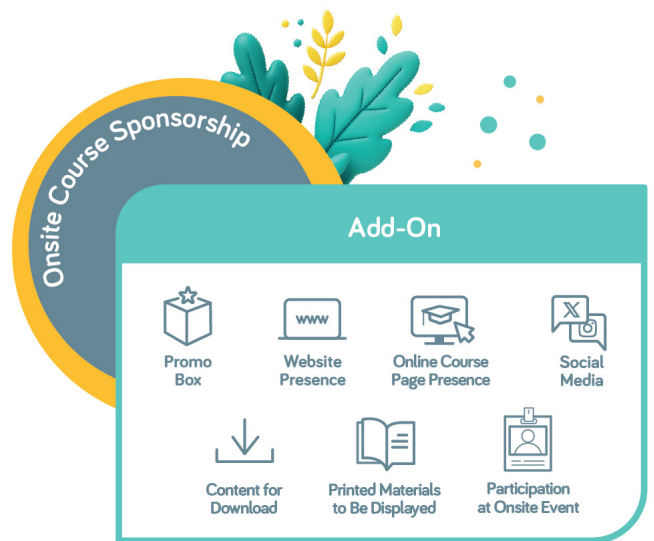
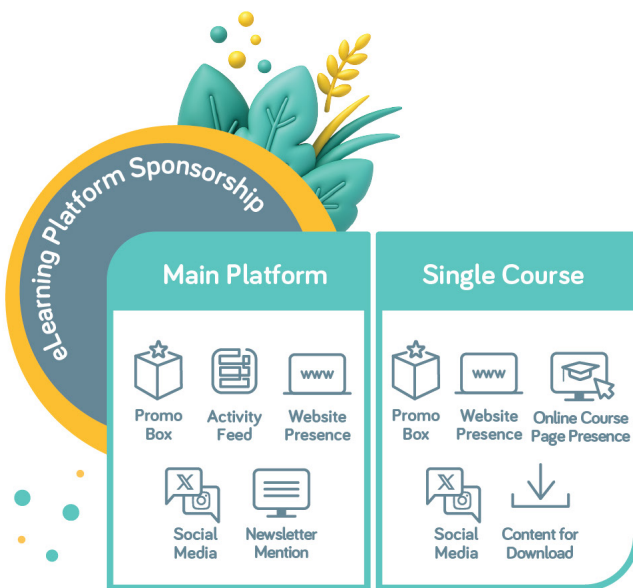
esmit.eanm.org

Overview

1. Sponsorship Matrix	3
2. eLearning Platform Sponsorship	4
Main Platform Sponsorship	4
Single Course Sponsorship	7
3. Onsite Course Sponsorship Add-On	10
4. DICOM Viewer Sponsorship	11
5. Focused Training Sponsorship	12
6. Contact Details	13



Sponsorship Matrix

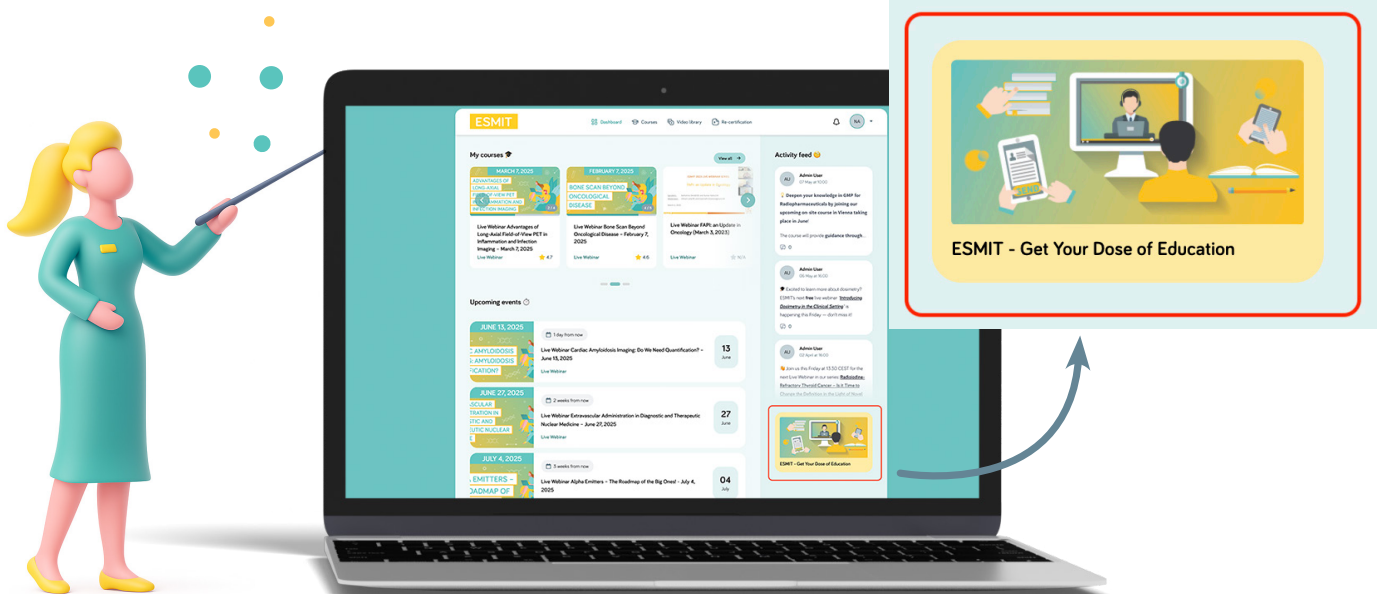


1. eLearning Platform Sponsorship

Main Platform Sponsorship

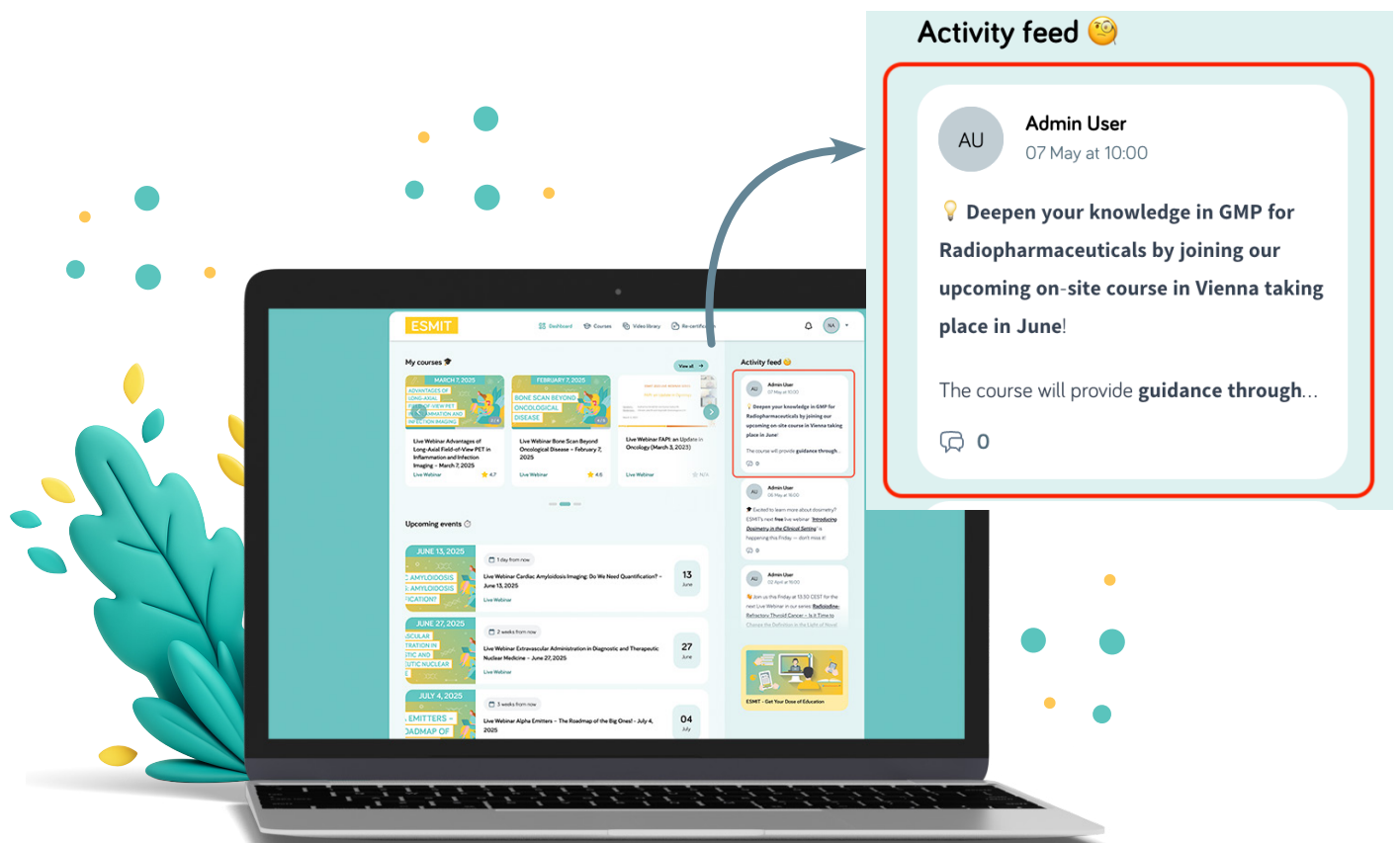
- **Promo Box**

- Possibility to add text and 1 image
- Available for one sponsor at a time, for a length of one year
- Permanent visibility
- Possibility to link to external resources
- Possibility to change the box once a month, free of charge (12 annual changes free, any additional change is subject to additional fees)



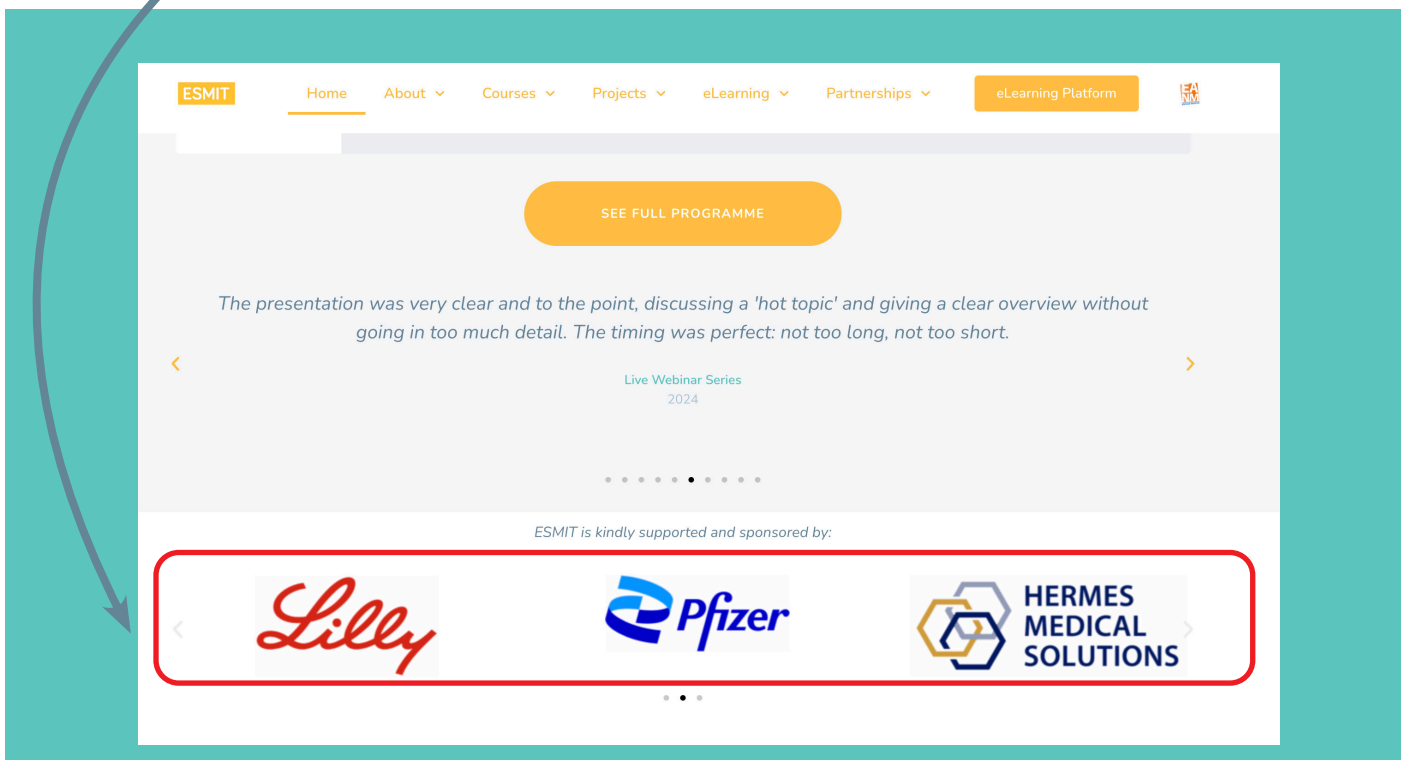
• Activity Feed

- Maximum of 2 Activity Feed posts per year for sponsor (sponsor can choose when to post in accordance with ESMIT office timeline)
- Possibility to add text and 1 graphic element
- Possibility to link text to external resources (e. g. website)
- Possibility for users to interact with post (i. e. to write comments)
- Post will remain on top of the Activity Feed until new posts are created, afterwards, users can scroll down to see older posts



- **Website presence**

- Logo in sponsorship carousel at the bottom of main page



- **Social media and communications presence**

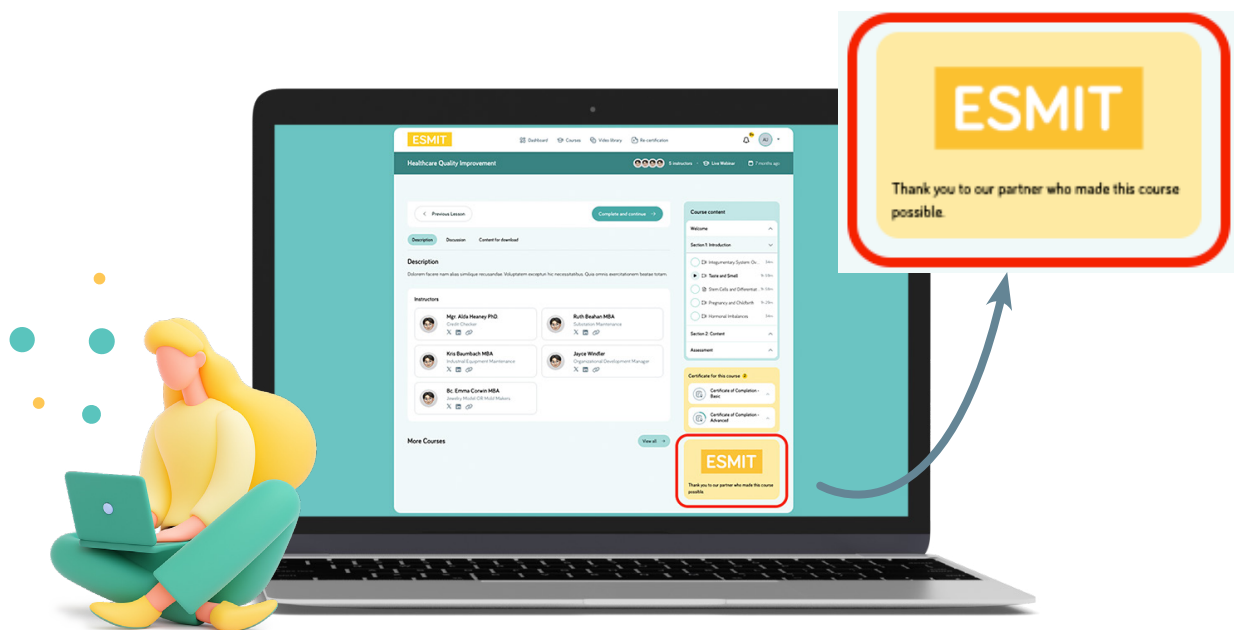
- Company mention in 2 LinkedIn posts per year, with the possibility to link to company website
- Thank you mention in 1st ESMIT newsletter of the year ("This year's programme is brought to you thanks to the collaboration of...") with the possibility to link to company's website



Single Course Sponsorship

- **Course Promo Box**

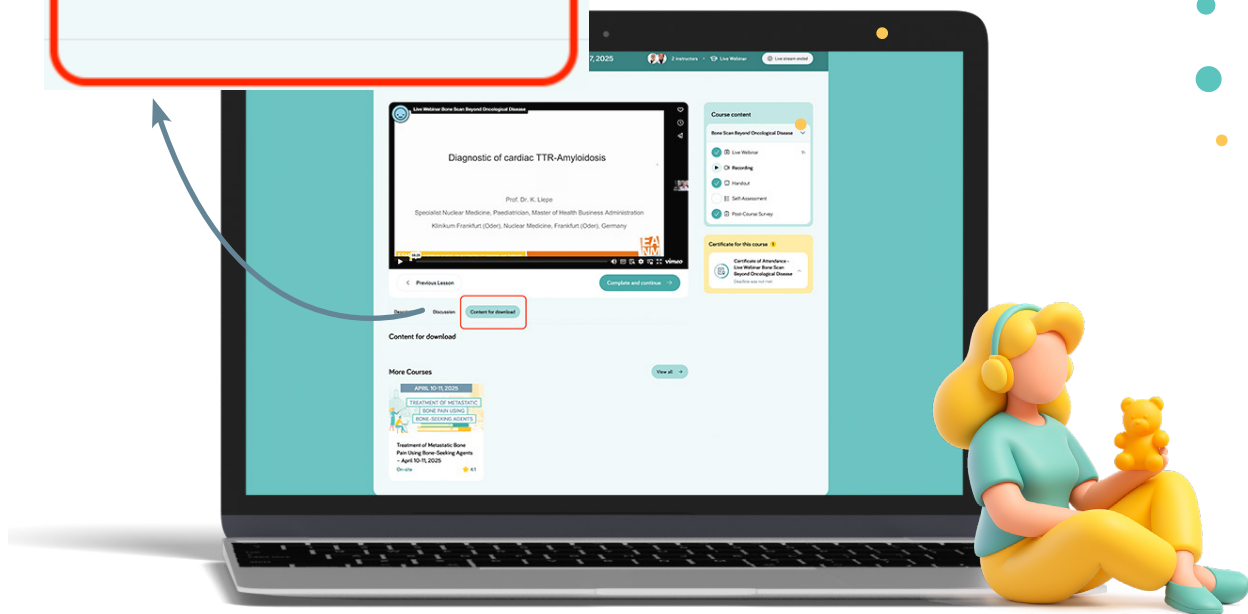
- Possibility to add text and 1 image
- Permanent visibility
- Possibility to link to external resources
- Available for one sponsor at a time, for the duration of the course online (2 years)



- **Content for Download**

- Possibility to upload documents of up to 1GB within one specific course
- EANM will not include the promotion of any products or similar – content will be reviewed in advance by the ESMIT office

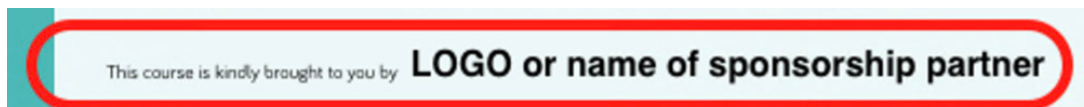
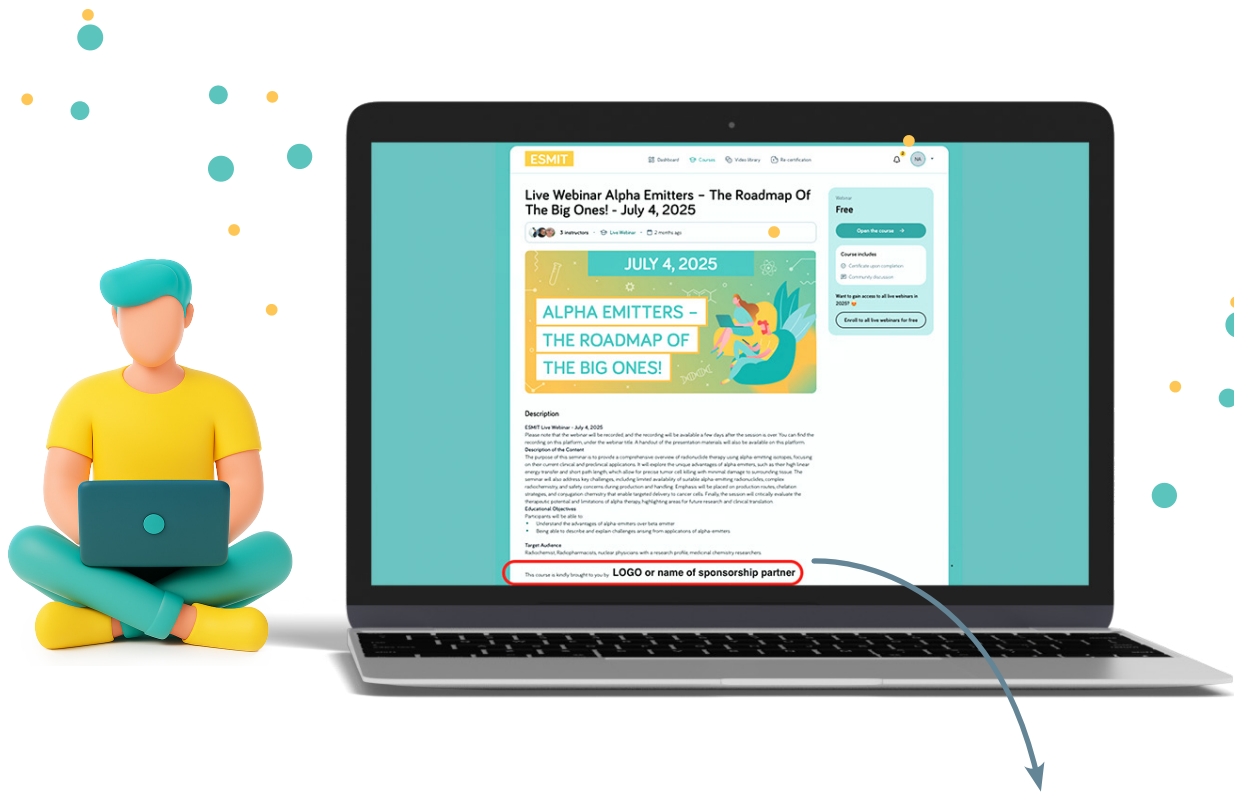
Content for download



• Course Description

- Company logo included in course description (“this course is kindly brought to you by..”) and possibility to link to external resources





• Website presence

- Company logo on individual course page (“This course is kindly brought to you by...”)
- Logo in sponsorship carousel at the bottom of the main page

• Social media and communications presence

- Company mention in 2 LinkedIn posts per year (course promo post and course wrap-up post), with possibility to link to company website

2. Onsite Course Sponsorship Add-On

Single Course Sponsorship Add-On

- Only valid in combination with Single Course Sponsorship online
- This includes all the features of a Single Course Sponsorship online and additional onsite presence in the course
- Rollup and printed materials (flyers etc.) provided by sponsor — to be reviewed and approved by the ESMIT Office in advance – in accordance with Rules of Behaviour
- Participation of 1 sponsor representative at no added cost, travel and accommodation are not covered by EANM



3. DICOM Viewer Sponsorship (2027 Onwards)

- **Deal: sponsor provides DICOM viewer software for case readings within onsite course**
 - Tech support leading to course (information to office, support to speakers, management of case uploads, testing before course, support to participants if needed)
 - Tech support onsite
 - Export of DICOM files after course. Materials submitted remain in ESMIT ownership
 - Onsite representative needs to adhere to Rules of Behaviour
- **Presence in course carousel on website**
- **Company logo on course page on website and eLearning platform (“this course was kindly brought to you by...”)**
- **Company logo on social media promo posts**
- **Printed materials (e. g. flyers) can be provided by onsite representative — to be reviewed and approved by the ESMIT Office in advance – in accordance with Rules of Behaviour**

4. Focused Training Sponsorship

Focused Training projects are longer tailor-made educational grant initiatives developed by ESMIT in collaboration with strategic partners. These projects concentrate on a single disease area or clinical challenge, offering high-quality, CME-accredited blended learning programmes that combine online modules, live workshops, and hands-on training. Examples include AD-LEARN (biomarker-based diagnosis of neurocognitive disorders) and EURO-LEARN (cardiac amyloidosis).

By partnering with us, industry stakeholders can support impactful education that addresses unmet training needs, ensures consistent clinical practice across Europe, and promotes the rational use of advanced diagnostic and therapeutic technologies.

For more information or expressions of interest, please contact the ESMIT office at esmit@eanm.org



5. Contact Details

Exhibition & Sponsoring

Alexander Berger
Schmalzhofgasse 26
1060 Vienna, Austria
Phone: +43 1 890 44 27
Email: a.berger@eanm.org

Clemens Wadsak
Schmalzhofgasse 26
1060 Vienna, Austria
Phone: +43 1 890 44 27
Email: c.wadsak@eanm.org

Educational Content

ESMIT
Schmalzhofgasse 26
1060 Vienna, Austria
Phone: +43 1 890 44 27
Email: esmit@eanm.org

